



STEADMANS
ROOFING & CLADDING



Agricultural Building
Solutions

Steadmans is one of the UK's leading manufacturers and suppliers of **high-quality building envelope solutions.**

With a proud heritage dating back to 1911, we specialise in the manufacture of roofing and cladding systems, secondary steelwork, and associated accessories for a wide range of construction sectors including **Industrial, Agricultural, Offsite, Modular, and Commercial.**

Operating from our state-of-the-art manufacturing facility near Carlisle, Steadmans provides full **national coverage** supported by regional sales teams. We deliver reliable, high-performance solutions that support projects across the UK and Ireland.



Key Facts

- Established over **100 years** ago, operating from our Warnell site since 1988
- Became **part of SIG plc** in 2008, now operating under Building Solutions (National) Ltd
- Employs over 150 staff including experienced designers, engineers, and production **specialists**
- Offers full **technical support** including CAD details, specification guidance, and design input
- Known for **reliable** lead times, **competitive** pricing, and a **comprehensive** product range

Our Portfolio

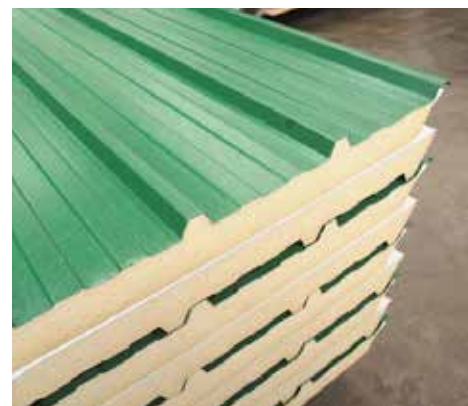
- Single Skin Profiles
- Composite Insulated Panels (AS35 & ASMR)
- Secondary Steelwork including Purlins, Side Rails, Eaves Beams & Mezzanine Beams
- Steelwork for Offsite and Modular application
- Flashings, Gutters, Fixings & Accessories

Our reputation is built on technical expertise, product quality, and a commitment to continuous investment in British manufacturing. Whether you're delivering large-scale industrial builds or fast-track modular installations, **Steadmans is your trusted supply partner.**

COMPOSITE PANELS

Steadmans insulated panels are self-supporting composite panels for building cladding.

- The external face has clean, sharp lines and panels are available in an extensive range of finishes and colours, enabling designers to create modern, visually-engaging buildings.
- Attractive and durable, they are used in a wider range of sectors.



VENTILATED WALL SHEETS

Ventair, Steadmans metal wall cladding sheet, meets the agricultural industry's need for effective ventilation, as well as a variety of other applications.

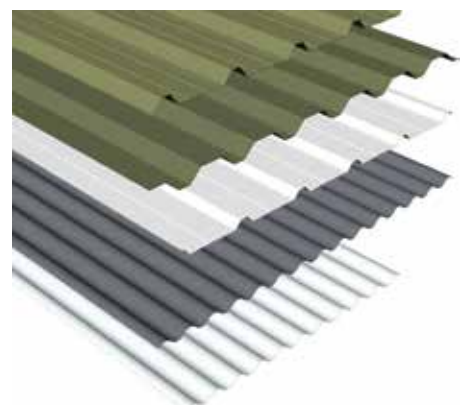
- Louvred slots provide efficient ventilation and ambient natural light while excluding water penetration and direct vision.
- It is ideal for livestock buildings, equine arenas, menages, milking parlours, or other buildings requiring good natural ventilation.



SINGLE SKIN ROOF & WALL SHEETS

Our single skin steel cladding roof and wall systems offer rapid coverage and swift completion of a weatherproof building envelope to give a high performance building.

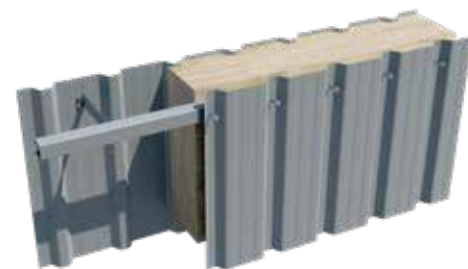
- The systems all include a comprehensive range of fixings, sealants, guttering, flashings and rooflights.



TWIN SKIN ROOF & WALL SHEETS

Our twin skin steel cladding roof and wall systems offer rapid coverage and swift completion of a weatherproof building envelope to give a high performance building.

- The systems all include a comprehensive range of spacers, fixings, sealants, guttering, flashings and rooflights.



ZED ROOF PURLINS*

Roof zed purlin systems allow for a flexible efficient range of solutions to roofing supports for a wide variety of cladding types.

- Four structural systems are available, all of which allow for a flexible and efficient range of solutions to roofing supports for a wide variety of cladding types.



ZED & CEE SHEETING RAILS*

Sheeting rails may be selected as either zed or cee profile sections.

- Formed from the same coils, they are each available in the same depth and thickness range.
- Cees may be substituted for zeds at window and door framing and at composite cladding joints, etc.



EAVES BEAMS*

Folded indented sections with a maximum length of 10m are available in 200mm and 240mm depth.

- A 300mm deep flat back or non-indented eaves beam is available up to a span of 12.5m to complement the 300 series of purlin sections.
- Eaves beams are usually single spanning but the 200 and 240 series may be supplied as double spanning up to a 5m span and the 300 series can be double spanning up to a 7.5m span.



FLASHINGS & GUTTERING

We manufacture a wide range of ridge, barge, verge, gutter, apron, cap, corner, internal and drip flashings in galvanised, polyester, PVF2 or Plastisol, leathergrain and Scintilla finishes to complement our roofing and cladding systems.



*Formed from hot dipped galvanised steel coil to BS EN 10346:2015 Fe E390G-Z275.

Let's Work Together

Steadmans manufactures and supplies high-quality roofing and cladding materials, with fabrications and accessories, offering comprehensive solutions for UK-wide construction projects.

Steadmans

Warnell, Welton
Carlisle
Cumbria
CA5 7HH
United Kingdom

www.steadmans.co.uk



England, Wales & Ireland:

T: 01697 478 277

E: sales@steadmans.co.uk

Northern Scotland:

T: 01651 891 668

E: fyvie@steadmans.co.uk

Southern Scotland:

T: 01697 478 277

E: uddingston@steadmans.co.uk

Whatever your project requirements, Steadmans has the products, capabilities, and technical expertise to deliver.

Get in touch with our team today for quotes, advice or to arrange a site meeting.





STEADMANS
ROOFING & CLADDING

To find out more, visit

www.steadmans.co.uk



Follow us on **social**

Steadmans

Warnell, Welton, Carlisle, Cumbria, CA5 7HH

All rights reserved. No part of this publication may be reproduced or transmitted in any form, or by any means, electronic or mechanical including photocopy, recording or any information storage and retrieval system, without permission in writing from SIG Trading Ltd. No information contained within this publication can be used to compile any other printed or electronic directory or mailing list. Whilst every effort has been made to ensure accuracy, the publisher does not, under any circumstances, accept responsibility for errors or omissions and no representation or warranty is made in relation to the suitability of a product for a specific application. Visuals are for illustration purposes only. E&OE.

Issue 1 - 07/2025 - © Building Solutions (National) Ltd 2025. All rights reserved.

