

**Gemello**<sup>®</sup>  
TWIN SKIN SYSTEM



**STEADMANS**  
ROOFING & CLADDING

**Gemello**<sup>®</sup> twin skin cladding system



## QUICK REFERENCE GEMELLO TWIN SKIN ROOFING AND WALLING

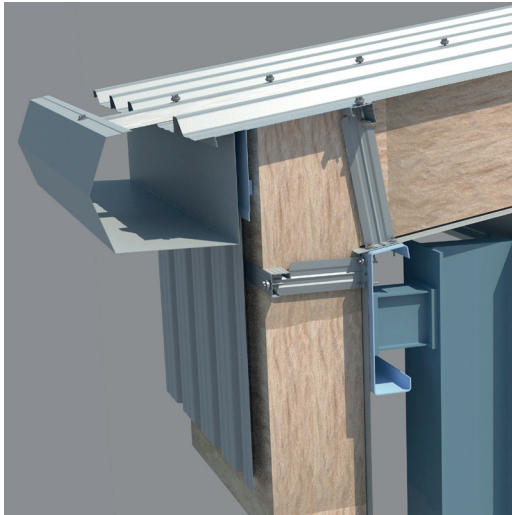
### **The Gemello® twin skin system is a comprehensive self-supporting roof and wall cladding solution**

The wide range of external cladding profiles are available in an extensive range of finishes and colours enabling designers to create modern, visually-engaging buildings.

This design flexibility of the Gemello® twin skin system makes it suitable for use on projects across many market sectors including industrial, retail, office, health, education, leisure and agricultural.

The Gemello® systems are suitable for cladding steel framed buildings and can be fully integrated with both modern and traditional methods of construction.

Gemello® systems provide thermal, structural and acoustic properties along with tested fire resistance.



introduction

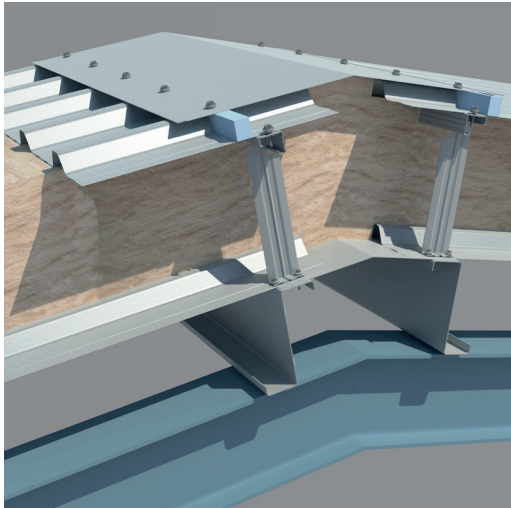
**The Gemello<sup>®</sup> system can be tailored to suit the aesthetic, and design requirements of a building application**

The Gemello<sup>®</sup> cladding range includes 5 trapezoidal roof profiles, 5 wall profiles and 6 internal liner profiles, all with 1000mm cover width.

All roof profiles are classed non-fragile to the materials standard in the Advisory Committee for Roof Safety “Red Book” ACR[M]001:2019: 6th Edition.

In addition, there are 4 sinusoidal (corrugated) wall profiles available in set widths.

The thermal performance comes from an insulation cavity formed by an engineered bar and bracket spacer system with the void filled using non-combustible mineral or glass fibre insulation under 10% compression. Thermal U-values as low to 0.14W/m<sup>2</sup>K are typical for lower U-values, contact the Technical team.





## QUICK REFERENCE GEMELLO TWIN SKIN ROOFING AND WALLING

### Typical Roof System Build-Up

0.7mm coated galvanised outer sheet

Bar and bracket spacer system

Insulation quilt under 10% compression

0.7mm coated galvanised steel liner

Optional Vapour Control Layer if the liner cannot be robustly sealed



overview

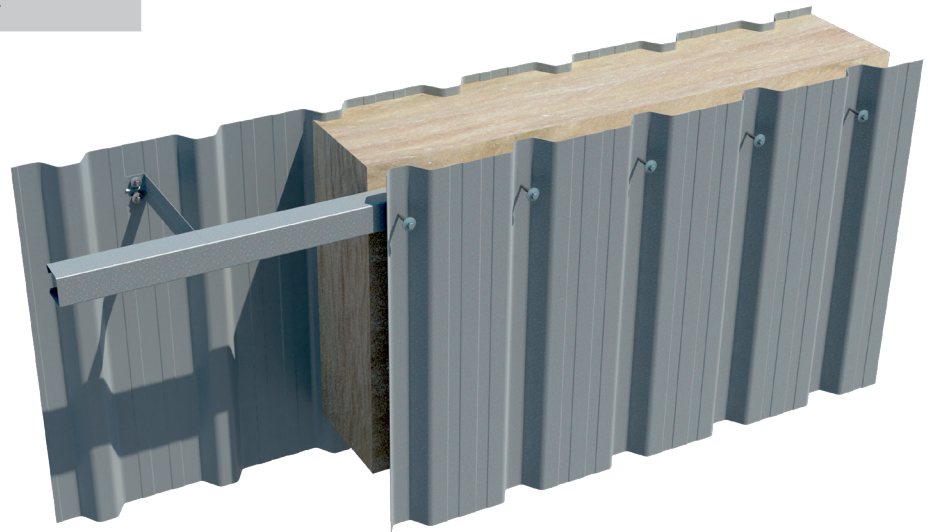
### Typical Wall System Build-Up

0.5mm coated galvanised outer sheet

Bar and bracket spacer system

Insulation quilt under 10% compression

0.4mm coated galvanised steel liner





## QUICK REFERENCE GEMELLO® TWIN SKIN ROOFING AND WALLING

**A wide range of accessories are manufactured and supplied to complete a Gemello® roofing and cladding project**

### **Rooflights**

Site assembled in-plane GRP rooflight are available in a range of Gemello® roof profiles, providing natural daylighting, reducing the need for artificial light, saving energy and can help reduce the carbon footprint of an industrial building.

### **Gutters**

A complete range of gutters and rainwater goods can be manufactured and supplied to meet the specific requirements of an individual project.

Gutters are fabricated in a variety of materials including aluminium, pre-galvanised steel, pre-coated steel with a PVC finish, and membrane lined gutters, to suit the designer's needs.

Insulated membrane lined gutters are available for designs where the gutter form part of the insulated building envelope.

### **Flashings**

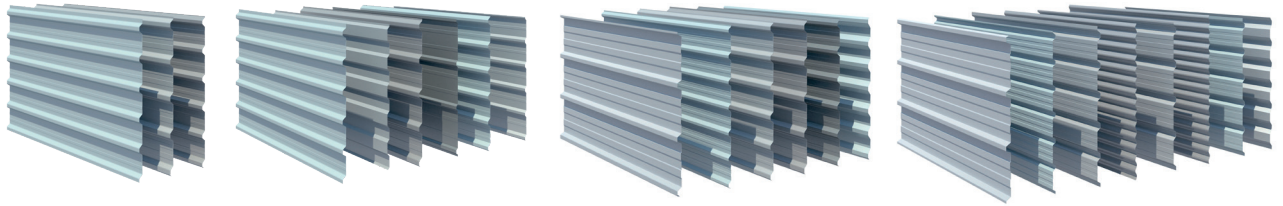
Flashings can be manufactured in range of finishes and designs to suit a customer's design.

### **Fasteners, Fillers and Sealants**

All fasteners, spacer systems, sealants and profiled fillers are to be supplied by SIG Building Solutions to comply with the Gemello® system guarantee.



OVERVIEW



materials

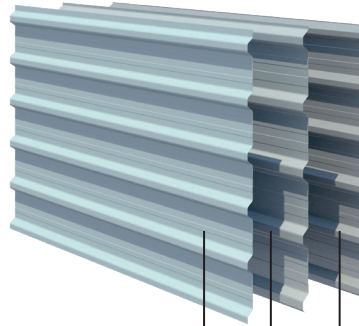
Coating	Thickness	Applications
Colorcoat HPS200 Ultra <sup>®</sup>	200µm	Suitable for roofs and walls in severe industrial and coastal/marine environments.
Plastisol Leathergrain	200µm	High performance, durable coating at a competitive price.
Liner	15µm	Suitable for lining roofs and walls. Not suitable for polluted or high humidity environments.
Colorcoat Prisma <sup>®</sup>	40-65µm	Suitable for roofs and walls in severe industrial and coastal/marine environments where metallic colours are required.



## QUICK REFERENCE GEMELLO TWIN SKIN ROOFING AND WALLING

liner profiles

### Roof Liner Profiles



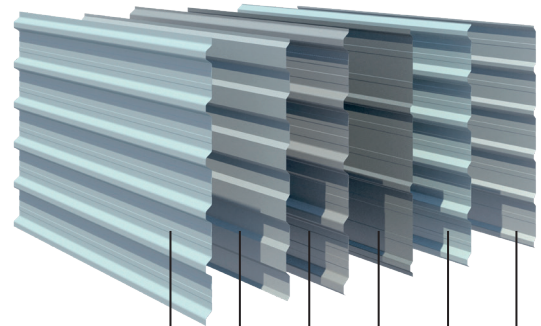
Roof Inner

AS30/1000 L

TF32/1000 L - 4 Pan

URP32/1000 L

### Wall Liner Profiles



Wall Inner

AS30/1000 L

AS20/1000 WL

TF32/1000 L - Pan

TF17/1000 WL

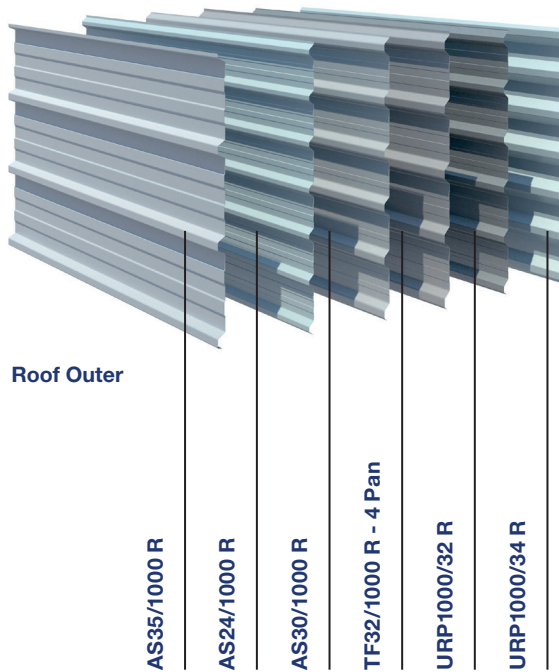
URP32/1000 L

URP20/1000 WL

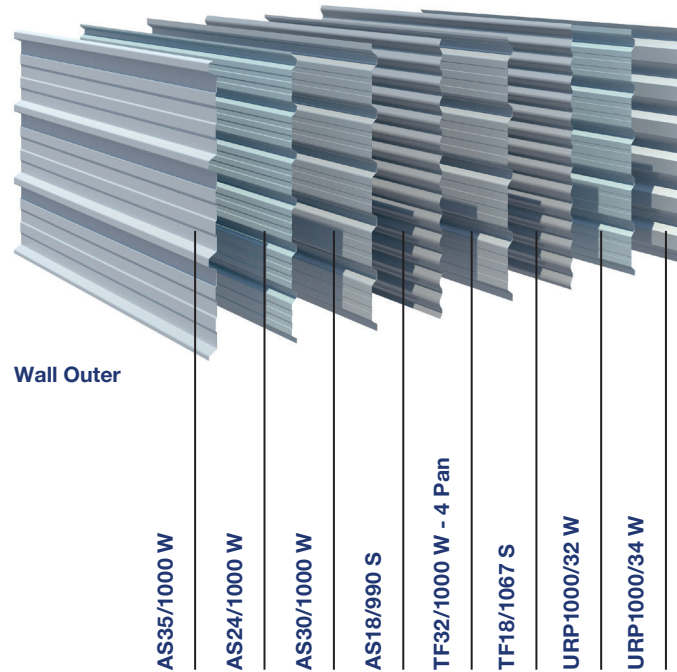


# external profiles

## Roof Profiles



## Wall Profiles





## QUICK REFERENCE GEMELLO TWIN SKIN ROOFING AND WALLING

### Coating Warranty

Cladding material	Coating warranty period
Colorcoat HPS200 Ultra®	Up to 40 years
Leathergrain Plastisol	Up to 30 years
Colourcoat Prisma®	Up to 40 years

### System Warranty

Gemello® system	System warranty period	Fixing type
Gemello® 30	30 years	A4 (316) Stainless steel
Gemello® 25	25 years	A2 (304) Stainless steel
Gemello® 12	12 years	Carbon steel

A4 (316) Stainless steel fixings for coastal locations.

Gemello® Warranty references consist of both the system and external coating warranty periods. i.e. Gemello® 25/30: 25 year system warranty, up to 30 year material coating warranty.

warranty

**Acoustic Sound Insulation Performance, Rw dB**

Top sheet	Nett insulation thickness mm	Liner	Rw dB
Roof, 0.7mm steel, 24mm to 34mm profile depth	180	0.7mm steel, 30mm to 32mm liner profile depth	36
Roof, 0.7mm steel, 24mm to 34mm profile depth	290	0.7mm steel, 30mm to 32mm liner profile depth	38
Wall, 0.5mm steel, 24mm to 34mm profile depth	180	0.4mm steel, 17mm to 20mm liner profile depth	34
Wall, 0.5mm steel, 24mm to 34mm profile depth	290	0.4mm steel, 17mm to 20mm liner profile depth	38

**U Values – Roof Systems**

U W/m <sup>2</sup> K	λ0.040 W/mK Nett insulation depth mm
0.25	180
0.20	230
0.18	250
0.16	300
0.15	n/a
0.14	n/a

**U Values – Wall Systems**

U W/m <sup>2</sup> K	λ0.040 W/mK Nett insulation depth mm
0.25	180
0.20	230
0.18	250
0.16	300
0.15	n/a
0.14	n/a

**Acoustic Notes:** Insulation is λ0.040W/mK glass quilt. Rw values are indicative for the range of profile depths. Rw values by MCRMA/Salford University SRIPT software modelling. Solid (non-perforated) liner, 1.5m spans.

**U Value Notes:** Spacer depth = nett insulation depth. Insulation depth should be +10% for compression. These tables are indicative only. Please contact Technical for scenario specific information.



#### England & Wales

Warnell,  
Welton,  
Carlisle,  
Cumbria  
CA5 7HH

**T**) 016974 78277

**F**) 016974 78530

#### Scotland & Ireland

Unit C,  
Coalburn Road,  
Bothwell,  
Glasgow  
G71 8DA

**T**) 01698 819 050

**F**) 01698 801 764

#### Northern Scotland

Mill of Crichtie  
Fyvie,  
Turriff,  
Aberdeenshire  
AB53 8QL

**T**) 01651 891 668

**F**) 01651 891 698

©Building Solutions (National) Ltd.

Gemello is a trademark of Building Solutions (National) Limited.

The information given in this guide shall be regarded as accurate at the time of going to print and may be subject to change thereafter. Building Solutions (National) Limited reserves the right to alter or delete any product and/or technical specification featured in this guide without prior notice.

Colorcoat, Colorcoat HPS200 Ultra, Colorcoat Prisma, Colorcoat LG<sup>®</sup> are trademarks of Tata Steel UK Limited.

Issue 1 - 03/2023 / SK

A Steadman & Son is a trading division of  
Building Solutions (National) Ltd