



**STEADMANS**  
ROOFING & CLADDING



**Modular Building**  
Solutions



## Steadmans is one of the UK's leading manufacturers and suppliers of **high-quality building envelope solutions.**

With a proud heritage dating back to 1911, we specialise in the manufacture of roofing and cladding systems, secondary steelwork, and associated accessories for a wide range of construction sectors including **Industrial, Agricultural, Offsite, Modular, and Commercial.**

Operating from our state-of-the-art manufacturing facility near Carlisle, Steadmans provides full **national coverage** supported by regional sales teams. We deliver reliable, high-performance solutions that support projects across the UK and Ireland.



Our reputation is built on technical expertise, product quality, and a commitment to continuous investment in British manufacturing. Whether you're delivering large-scale industrial builds or fast-track modular installations, **Steadmans is your trusted supply partner.**

### Key Facts

- Established over **100 years** ago, operating from our Warnell site since 1988
- Became **part of SIG plc** in 2008, now operating under Building Solutions (National) Ltd
- Employs over 150 staff including experienced designers, engineers, and production **specialists**
- Offers full **technical support** including CAD details, specification guidance, and design input
- Known for **reliable** lead times, **competitive** pricing, and a **comprehensive** product range

### Our Portfolio

- Single Skin Profiles
- Composite Insulated Panels (AS35 & ASMR)
- Secondary Steelwork including Purlins, Side Rails, Eaves Beams & Mezzanine Beams
- Steelwork for Offsite and Modular application
- Flashings, Gutters, Fixings & Accessories



# Modular Building, Made Simple.

At Steadmans, we specialise in supplying the essential **structural and external envelope components** that power the modular construction sector.

Our products are designed for rapid installation, exceptional performance, and enduring reliability. Everything you need for a successful offsite build.

Whether it's a single module for a garden office or a large-scale mobile health care unit, we understand the needs of modular manufacturers.

Our modular offering combines cutting-edge steelwork, high-performance cladding, and a wide range of tailored accessories to streamline your build and ensure lasting quality.

## What we offer

- Structural steel floor & roof joists
- Composite panel & single skin cladding systems
- Bespoke accessories including trims, flashings, & fixings

With Steadmans, you get precision-engineered products and a responsive supply chain, all from one trusted UK source.





## Floor & Roof Joists

Our secondary steelwork joists are the backbone of modular structures.

Designed to be fitted between the main frame of floor and roof cassettes, they ensure each module is robust, dimensionally stable, and ready to perform in demanding environments.

### Available Configurations

- Riveted cleated ends
- Integrally cleated ends
- Plain channels with loose cleats



### Manufacturing Excellence

- Produced using S450 pre-galvanised steel for strength and durability
- Available in both standard and bespoke profiles
- Cut, punched, and prepared offsite to your exact specifications

Every joist we supply is built for accuracy and speed - reducing on-site work and helping you meet tight programme deadlines with confidence.

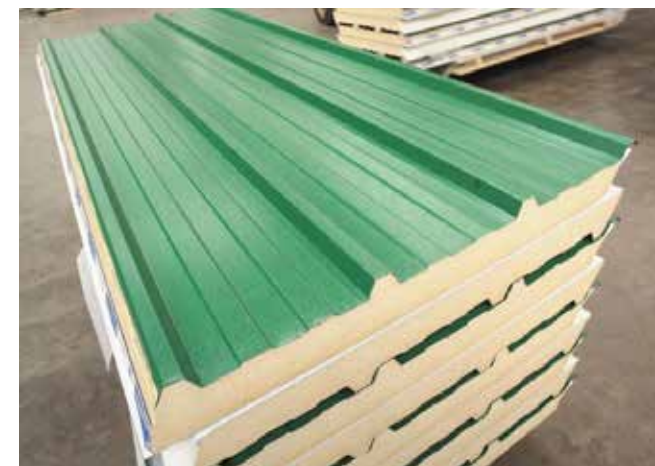


## Cladding Options

Our cladding systems do more than protect - they define the finished look of your modular structure.

Designed for both form and function, our cladding options suit a wide range of applications:

- Healthcare pods
- Modular classrooms and school extensions
- Portable commercial and retail spaces
- Garden rooms and domestic units



### Our Range Includes

- High-performance insulated composite panels for thermal efficiency
- Single skin profiles for flexible lightweight coverage
- A palette of colours and surface finishes to match your brand or environment

With multiple profiles and thicknesses available, our cladding systems can be tailored to meet your aesthetic and technical demands - while maintaining compliance with industry standards.



## Accessories

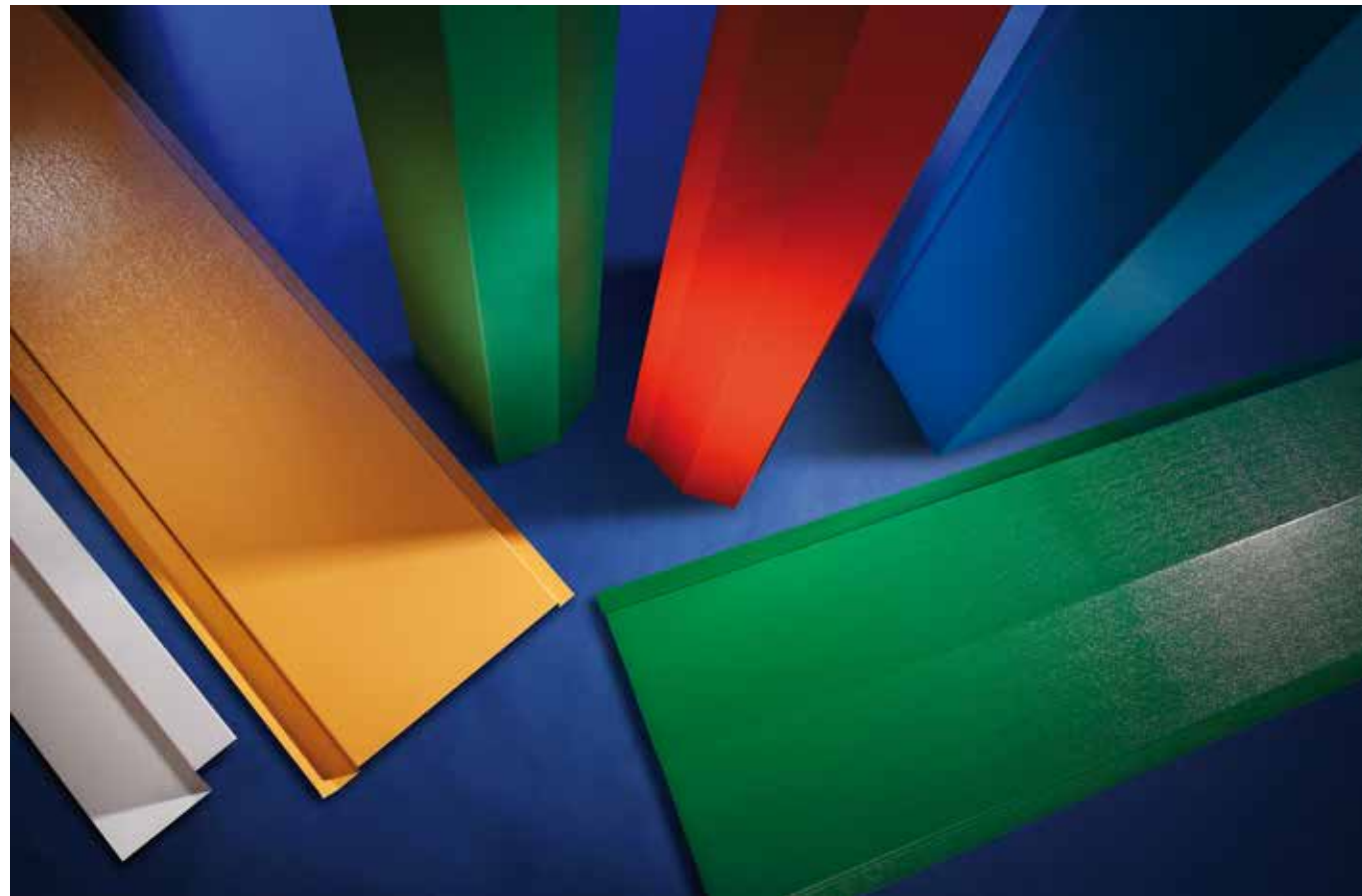
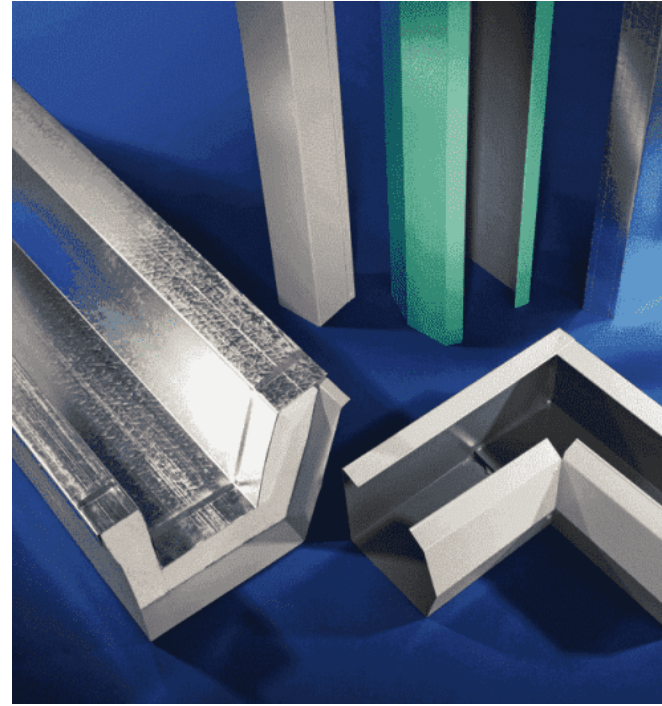
A modular build is only as good as its finish and our accessories ensure every unit looks sharp and performs perfectly.

Whether it's a corner flashing, a window trim, or a specialist fixing, we've got the final details covered.

### What We Supply

- Made-to-measure flashings manufactured to your drawings
- A full colour-matching service to coordinate finishes
- Fixings and fasteners optimised for composite and single skin systems

These components may be small, but they make a big impact - protecting your build, enhancing its appearance, and simplifying on-site installation.



## Why Steadmans for Modular?

At Steadmans, we bring decades of experience supporting the offsite and modular construction industry.

We understand the need for speed, reliability, and consistency and our solutions are tailored to meet the demands of factory-based construction.



### Why Modular Builders Choose Us

- Large stockholding for reduced lead times
- Nationwide delivery to modular manufacturing hubs
- Seamless integration into your design and procurement workflows

From early design advice to consistent supply, we're here to help modular projects move faster with fewer issues and more peace of mind.



## Let's Work Together

Steadmans manufactures and supplies high-quality roofing and cladding materials, with fabrications and accessories, offering comprehensive solutions for UK-wide construction projects.

Whether you're scaling up production or developing a new modular concept, we're here to support you. Our modular team offers technical guidance, custom manufacturing options, and end-to-end supply solutions.

### **Steadmans**

Warnell, Welton  
Carlisle  
Cumbria  
CA5 7HH  
United Kingdom

[www.steadmans.co.uk](http://www.steadmans.co.uk)



### **England, Wales & Ireland:**

T: 01697 478 277

E: [sales@steadmans.co.uk](mailto:sales@steadmans.co.uk)

### **Northern Scotland:**

T: 01651 891 668

E: [fyvie@steadmans.co.uk](mailto:fyvie@steadmans.co.uk)

### **Southern Scotland:**

T: 01697 478 277

E: [uddingston@steadmans.co.uk](mailto:uddingston@steadmans.co.uk)

Whatever your project requirements, Steadmans has the products, capabilities, and technical expertise to deliver.

Get in touch with our team today for quotes, advice or to arrange a site meeting.





To find out more, visit

**[www.steadmans.co.uk](http://www.steadmans.co.uk)**



 Follow us on **social**

## **Steadmans**

Warnell, Welton, Carlisle, Cumbria, CA5 7HH

All rights reserved. No part of this publication may be reproduced or transmitted in any form, or by any means, electronic or mechanical including photocopy, recording or any information storage and retrieval system, without permission in writing from SIG Trading Ltd. No information contained within this publication can be used to compile any other printed or electronic directory or mailing list. Whilst every effort has been made to ensure accuracy, the publisher does not, under any circumstances, accept responsibility for errors or omissions and no representation or warranty is made in relation to the suitability of a product for a specific application. Visuals are for illustration purposes only. E&OE.

Issue 1 - 07/2025 - © Building Solutions (National) Ltd 2025. All rights reserved.

